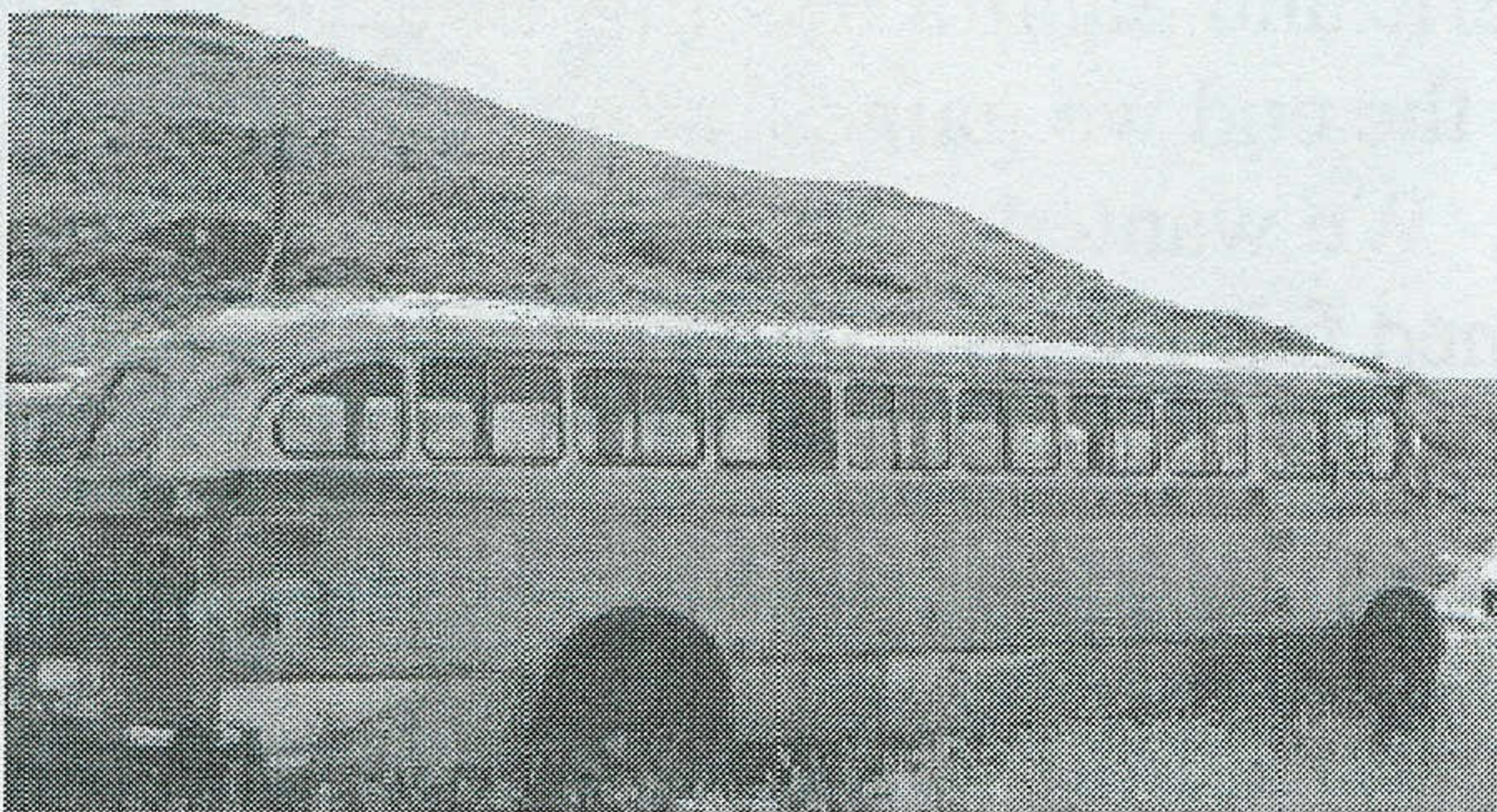


## A VISIT FROM THE PAST



This old bus sits on the side of the highway at an old abandoned gas station near a small town called Savona (half way between Cache Creek and Kamloops). It was discovered to be a 1947 Brill and was originally a Pacific Stage Lines Bus #6247 which did a Victoria, Vancouver, Seattle route.

The Foundry where the Brill coaches were constructed began its operation in November of 1909.

Production of the Brill coaches ended in 1954.

The Vancouver Brill trolley fleet was the last fleet of Brills to operate and they were finally retired in 1954.



(With thanks to Ron and Marilyn Matthews for providing the photos)